



# SHUSWAP HOSPITAL FOUNDATION

## Memorial Tributes

**Simply click on the name of the memorial you wish to view.**

Dr. R. John Alexander  
Dorothy Askew  
Roger Blythe Ayles  
Evelyn Leona Bickle  
Bertha Evelyn Brecknell  
Gordon Brese  
Jim Casselman  
Cody Allan Davies  
Catherine Dilworth  
Claire Finnen  
Hatsumi Grace Fujikawa  
Annelore Elizabeth Gizzas  
Hazel Ruby Golnick  
Captain Eve Forest Gulliford MD  
George K. Haslop  
Stanley Karpowich  
Gordon Marshall  
Winston McCall  
Isobel Margaret McKendry  
Erwin Helmut Mier  
Howard Irvin Mobley  
Ruby Annie Gloria Mobley

Ingrid Monk  
John Monk  
Anna Marie Mueller - Harmier  
Neil Oral (Bud) Nicklason  
Clifford Norris  
William (Bill) Pryhitko  
Paul Pukas  
Shayne Ready  
Garry Edward Rolin  
Raymond John Smith  
Diana Sneve  
Julian Strilchuk  
Robert Arthur (Bob) Stroulger  
Emile Villeneuve  
James Ross Wainwright  
Ronald Bertram Walton  
Mary Watt  
John Wayslow  
Dr Ralph Williams  
Betty Anne Wood



**1915 ~ 1963 Dr. R. John Alexander** practiced medicine in the Shuswap from 1948 when he re-located from Kamloops. This followed a short but distinguished career in R.C.A.M.C. He had a busy medical practice which he combined with a busy family life and a keen interest in community affairs. He served as president of the Salmon Arm Rotary Club and had a major influence in the housing projects undertaken by the club. He served on the board of the BCMA where he represented District 10. For relaxation and a break from being on call Dr Alexander loved fishing and golfing as outdoor activities.



**1921 ~ 2009 Dorothy Askew**, born in Kamloops raised and educated in Revelstoke, from an early age wanted to be a nurse. She received her RN in 1944 from Royal Columbian in New Westminster, came directly to Salmon Arm and began her practice in the old Salmon Arm Hospital. Her nursing career was cut short when she married Lloyd Askew in 1945. Her attention then was on raising her family and helping in a thriving grocery business. Dorothy and Lloyd were always there in support of the community. She spent countless hours volunteering for church, the Red Cross loan cupboard and many other community helping organizations.



**1957 ~ 2010 Roger Blythe Ayles**. Brought up in Regina he became a highly successful business man and a pillar of the Salmon Arm community since 1988, He lived life with tremendous honesty and fearlessness. He was a major property developer and was named Business Man of the Year in 2005. One of his sayings was -If you are not living on the edge, you are taking to much room-. He always found time for family even as he loved the outdoors.



**1934 ~ 2007 Evelyn Leona Bickle**, Ivy to her friends, was born in Brooklyn, Nova Scotia. She was a graduate nurse from Victoria General Hospital in Halifax. She resided in Guelph Ontario for 20 years before moving to Blind Bay with her husband Dr. Graham Bickle, in whose medical practice she worked as support staff for her husband in community psychiatry. Evelyn's interests included piano, knitting, sewing, hand crafts and square dancing. She was devoted to her church and family.



**1938 ~ 2009 Bertha Evelyn Brecknell** affectionately known to her friends as (Bert) is fondly remembered for her dedication with her family, grand children, horses and German shepherds. She had a passion for gardening, flowers and cooking, which included her famous chocolate chip cookies.



**1933 ~ 2007 Gordon Brese** was a long time resident of the Shuswap, having moved there from the Edmonton area. He was a tradesman mechanic who managed several filling station operations before joining the sales force of Salmon Arm Motors. Gordon was an ardent sportsman. He loved most sports, participating in many including golf, curling, fishing, hunting to name but a few. He was a family man who took an active part in his family.



**1942 ~ 2007 Jim Casselman** lived his life with extraordinary presence, always radiating an abundance of positive energy, kindness and meaningful wisdom. He was grateful every day for the gift of his precious family; Erica, Ivan and Graham. His practical skills and amazing knowledge, along with his gracious and caring spirit were unconditionally shared with his extended family, friends, students and anyone who had the privilege of connecting with this remarkable person. The essence of Jim's being continues to inspire the community of Salmon Arm.



**1985 ~ 2007 Cody Allan Davies** was raised in Sorrento. He was tragically killed in an industrial accident at Adams Lake Saw Mill. A fun loving young man with a passion for life. A volunteer fire fighter with the Shuswap Fire Department he was honored by a scholarship in his name for a student entering the emergency field. The Sorrento Elementary School dedicated a playground in his name. Cody loved sports and participated in all the local activities from snowmobiling to slow-pitch. He loved dirt biking and enjoyed being out on the lake as much as possible.



**1905 ~ 2005 Catherine Dilworth** was a true Shuswapien having been born and received her primary education in the Sorrento-Carlin area. She became an RN graduating from the Kamloops Hospital Academy of Nursing in 1929. She was dedicated to helping others in her soft spoken and gentle way. She practiced at Kamloops Hospital and then moved to the Tranquille Sanatorium, then nursed in Vancouver and in San Francisco until she retired to return to the Shuswap to care for her aging mother. In a final act of support bequeathed a major amount to the stewardship of the Sorrento Lions Club to be used for the betterment of the community.



Passed on February 24, 2008. **Claire Finnen** was a natural athlete. Played hockey from his youth to a short professional career ended when he contracted polio. He then became a chief ski instructor and took medals in all disciplines of skiing. He also enjoyed golf, tennis and racing shells. He spent many years working in the oil industry.



**1914 ~ 2006 Hatsumi Grace Fujikawa** was a British Columbian from birth. Mrs Fuji as affectionately known to many friends, was born in Revelstoke and moved around BC. She and her husband settled in the Notch Hill area and took up berry farming. Later they moved to Salmon Arm to retire. Mrs Fuji busied herself with a lot of baby sitting and became a knitter for the Hospital Auxiliary.



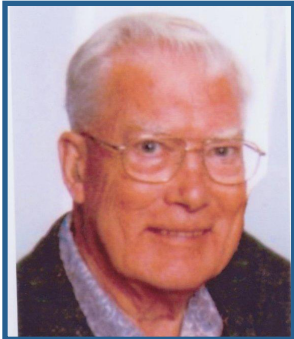
**1933 ~ 2007 Annelore Elizabeth Gizzas** was a hard worker. She was the consummate volunteer, giving of herself freely to church groups and the Churches Thrift Store. She spent 40 years volunteering with the Girl Guides of Canada. Annelore always had time for her family and friends.



**1942 ~ 2007 Hazel Ruby Golnick** was a deeply religious person devoted to her family and community. Hazel was well respected and cherished by all of those who knew her. She was known to be helpful and supportive to all those in need. Gone much too soon to her eternal reward.



**1917-1997 Captain Eve Forrest Gulliford MD** was born in a tent on Annacis Island BC. By age 24 she had received her log scaling certificate and Masters papers for operating tug boats. One of four women graduates of the 1950 class of Medicine at Queen's University, 'Dr. Eve' practiced her very special brand of healing for more than 40 years in Salmon Arm while raising her five children. She was influential in preserving McGuire Lake and the Herald property as parks, and was a strong youth advocate her whole life.



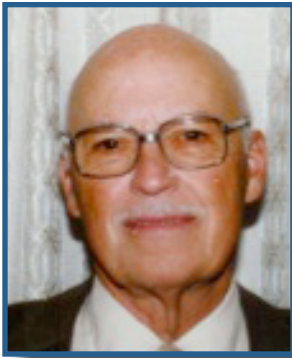
**1920~2010 George Kenneth Alfred Haslop** was born in Edmonton Alberta. He enlisted in the RCAF in 1941 and spent three years overseas serving his country. He served with distinction and was awarded the Distinguished Flying Cross. After the war George continued to serve his country in the Federal Civil Service working in the Health of Animals Branch. George was seen as a humble and quite man, a devoted husband, whose family always came first. He retired to the Blind Bay area in 1983 and moved in to Salmon Arm in 2004.



**1931 ~ 2007 Stanley Karpowich** was a local boy born on the family farm at Grindrod. He worked for a number of years in forestry and eventually opened a chain saw business in Salmon Arm. This business became "Wild Woodsman Equipment". It also spawned "Cardinal Rentals" a successful equipment rental business. After retirement Stanley enjoyed taking care of his garden and acreage in Grindrod known to locals as Stanley's Park.



**1927 ~ 1998 Gordon Marshall** was a dedicated business man. He was brought up in the auto industry working in a dealership in New Westminster owned by his father. He came to Salmon Arm 1961 and purchased Salmon Arm Motors. Gordon was very involved in the community, being a long time Rotarian, served on the hospital board as well as several other community groups. He loved the lake and was a vintage car buff. He loved to travel and he and wife Bev saw much of the world.



**1915 ~ 2005 Winston McCall** was born in Kamloops and spent much of his youth hunting, fishing and hiking the country around Kamloops. Win went into the grocery business and operated his own store, McCall's Grocery. In 1958 he moved with his family to Salmon Arm to build and operate the Super Valu, the community's first large grocery store. He sold the store in 1965. The next ten years were spent on a farm in Sorrento raising feeder cattle and generally enjoying being outside as much as possible. After selling the farm, they lived in Blind Bay and later, Salmon Arm where they spent much of their time golfing and traveling.



**1929 ~ 2001 Isobel Margaret McKendry** was born in Toronto but was a Salmon Arm resident since 1995. She was a family woman who devoted herself to her family, her children and grand children. She will be sorrowfully missed by all who knew her.



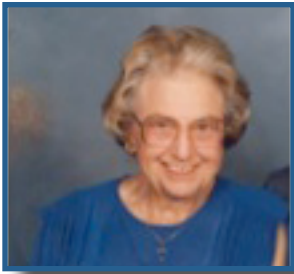
**1927 ~ 2000 Erwin Helmut Mier** born in Germany emigrated to Canada in 1953. Erwin spent the next 14 years in the oil exploration industry. In 1967 he and his family moved to Salmon Arm where they were in the mobile home business eventually developing Cedar Crescent mobile home park in Canoe. He was an avid outdoorsman who loved fishing and all outdoor sports. He was very adept and there was practically nothing he could not do.



**1907 ~ 2004 Howard Irvin Mobley** was a long time resident of the Shuswap. Born in the American heartland formed him to a lover of nature. He loved the outdoors and was happiest there. His career spanned many areas including being a surveyor, topographer, cartographer, entomologist, guide, sawmill operator, realtor, investment advisor. With his many life experiences he became known as a raconteur extraordinaire.



**1910 ~ 1991 Ruby Annie Gloria Mobley** was born in London England and became a Shuswap Pioneer moving to the area with her parents in 1913. She and her husband Howard lived in the Sunnybrae area for many years. She was dedicated to her family raising four children. She much enjoyed her grand and great grand children.



**1919 ~ 2009 Ingrid Monk** was from a forestry family and spent many years working in that industry. She and her husband John eventually retired in the Shuswap and became ardent community supporters. Ingrid was a many talented artist. She played piano, sang in choirs, was a skilled sketch artist and painter, and excelled in many crafts. She and her husband gave freely of themselves and their fortune helping many worthy causes. They are Founders of the Shuswap Hospital Foundation.



**1914 ~ 2002 John Monk** grew up in Grindrod. John served in the war overseas, and then with wife Ingrid settled in Vancouver where worked for the City of Vancouver, and later for the Junior College System, as an administrator. Upon retirement John and Ingrid moved to Sicamous for 16 years, then to Salmon Arm. Both volunteered their time and finances to support community endeavours, wherever they lived. As founding supporters of the Shuswap Hospital Foundation John believed their gifts were a wise investment in their own future well being and in the wellbeing of the community as a whole.



**1973 ~ 2004 Anna Marie Mueller - Harmier** was born in Edmonton Alberta but grew up and lived most of her life in Salmon Arm. She had a real zest for life and enjoyed skating, skiing, basketball, and most of all riding horses. She loved and was loved in return by her many friends, husband, and family. She was passionate about her chosen field of work in anthropology/sociology especially where it involves social justice. Her courage was inspirational during her seven year struggle with lymphoma which took her life on her 31st birthday. A gentle spirit taken much too soon.



**1955 ~ 2007 Neil Oral (Bud) Nicklason** was a local having been born in Kamloops and spent his life time in the Shuswap His working career was spent in the wood working industry. He, along with other partners started the Notch Hill Wood Door and Millwork. Later Bud purchased Custom Window and Glass Works. Bud loved the outdoors and his vacations in places such as Hawaii and Mexico.



**1920 ~ 2009 Clifford Norris** was a World War II veteran, serving in England as an airplane mechanic. He established and ran a successful machine shop in North Kamloops, eventually retiring in Sorrento and finally, in Chase. He loved the outdoors as evident from the many hunting, fishing, skiing and snowmobiling excursions he embarked on with friends and family. In addition he actively participated in environmental conservation with the Fish and Game club.



**1925 ~ 2007 William (Bill) Pryhitko** came to British Columbia from Saskatchewan in 1945 and began a long career with CP Railway. Bill was a life member of the Elks Lodge and was an active member of the Legion having received a 48 years continuous membership pin. He had a passion fishing, cutting the lawn with a straight line, and many driving trips.



**1937 ~ 2007 Paul Pukas** was a prairie boy moved to beautiful BC. Paul was dedicated to his family and was a passionate business man as well. His business successes included the creation of Salmon Arm Ready Mix and Tech-Crete Producers, Mount Ida Concrete. For nearly four decades the 'Concrete Mans' handshake was his guarantee. With other partners he was a principal in the redevelopment of Piccadilly Mall. Paul was always very generous in supporting the community.



**1929 ~ 2004 Shayne Ready** was born and raised in the Vancouver area. He graduated in Pharmacy from UBC in 1952 and married a classmate Holly a week later. After serving as a community pharmacist in the Vancouver area Shayne moved to Salmon Arm in 1965 with his family and operated Ready's Rexall Drugs and Camera Shop 'the corner drug store' until retirement in 1994. Shayne was a big part of the community. He was a Gilwell Scouter and assistant scout master in the 70s for the 1st Salmon Arm Scout Troop. He was a member of the Masonic Lodge and Royal Arch Masons.



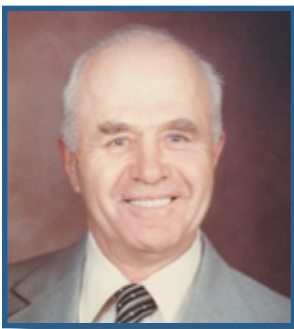
**1945 ~ 2006 Garry Edward Rolin** was born in Salmon Arm and was a lifetime resident of the Shuswap. Garry had a real love and talent for music. He played saxophone from the age of 14 and was well known for his talent across the Okanagan. Garry spent many years working in the hardware and lumber sales business and he looked upon his employees as his extended family. Garry will be sadly missed for his whistling, jokes, his music and his smiling face.



**1934 ~ 2007 Raymond John Smith**, Smitty to many of his friends was a New Zealander who was a qualified and expert machinist fitter who was well respected for his ability to design and build modern equipment in his years at Newnes in Salmon Arm. He was a tireless volunteer helping others in the community. He served as a volunteer ambulance attendant, on the hospital board, and his Hawaiian band played around the community including at Pioneer Lodge. In 1974 Smitty took part in the "Take Care Of Business" jamming marathon, setting a world record with 1,322 guitarists, Ray being the most senior, playing for 68 minutes, 40 seconds.



**1929 ~ 1993 Diana Sneve** was born in Vancouver. She and her husband Ray lived in the Sorrento area for many years. Though she had no family of her own she very much enjoyed her nieces and nephews and numerous other relatives and friends. She was taken much to soon with cancer and passed in Royal Inland Hospital in Kamloops.



**1916 ~ 2006 Julian Strilchuk** was a Saskatchewan boy who found his way to BC in depression days to find what ever work he could. He worked picking fruit and on a ranch. He eventually joined a CPR section gang. In the late 30's he homesteaded in the Grindrod area where he farmed until retirement, interrupted only by service in the army in WWII. Life for Julian meant 'work' until he retired when he took up sports such curling and golf. He was a part of the community serving as director of the Credit Union and a staunch member of the Enderby Lions, Enderby Legion, and the Grindrod Community Club.



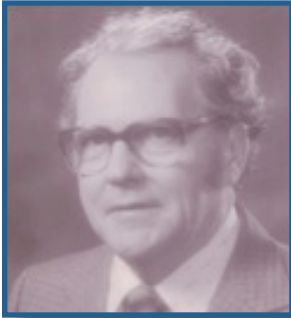
**1922 ~ 2007 Robert Arthur (Bob) Stroulger** was born in the Enderby area. He spent most of his life in the Shuswap farming with the exception of 10 years in the Kamloops area. Bob loved the land, his family, his friends, and life in general. He loved fishing, camping and baseball games. He was an accomplished beer maker and enjoyed sharing his product with friends. A thoughtful man who supported the community in many ways.



**1929 ~ 2008 Emile Villeneuve** was a prairie boy that had a deep love for the sea. Emile who was affectionately known as "Captain" by friends and neighbours of the Gardom Lake area where he retired. He earned his title after many years at sea visiting many parts of the world. In 1986 he qualified for his pilot's license and spent the next 23 years plying the coast and ports of BC. Emile was private man who enjoyed his friends. He was an avid cross country skier and jogger. Emile was a faithful member of the Knights of Columbus.



**1932 ~ 2002 James Ross 'Jim' Wainwright** was born in Toronto but moved to Victoria to attend Royal Roads Military College. He met his wife Ramona there and he entered the life insurance profession. He moved through his career and eventually retired to Salmon Arm. Jim loved to spend time at the cottage, sailing, boating, woodworking and visiting with neighbours. He enjoyed his computer and corresponded with family and friends and researching investments.



**1922 ~ 2007 Ronald Bertram Walton** was a British Columbian by birth. He served his country in WWII serving in the R.C.A. during that conflict. Spent his working life after the service in the lumber industry. Ron loved gardening, making wine, and spending time alone fishing on Shuswap Lake. He was a proficient fisherman winning several fishing derbies.



**1913 ~2008 Mary Watt** loved her family, helping others, and tending her plants and flowers. Over the years she was a dedicated volunteer working many hours for the Women's Institute, the local Red Cross, Seniors Branch #109, and the United Church Women. She truly enjoyed judging at the Salmon Arm Fall Fair for many years including 2007. She was a consummate communicator, always writing letters to old acquaintances. Her hands were always busy crocheting and knitting for others.



**1933 ~ 2005 John Wayslow** was born in Saskatchewan. He worked at Kodak Canada for 15 years at the coast then moved to Salmon Arm where he was employed at Mainline Co-Op and Revelstoke Building Supplies. John and wife June operated the Glen-Echo resort. John will be remembered by friends as 'Mr Fix It'. His love for family and generous spirit will be missed.



**1926 ~ 2000 Dr Ralph Williams** was a medical fixture in the Shuswap. A 1953 graduate in Medicine from University of Manitoba, he came to this community as a young man to relieve when the community was short physicians. He fell in love with the place and stayed on. Dr Ralph was always available to his patients, on-call nonstop 365 days a year. He was an integral part the medical staff organization and served several years as Chief of Staff. Throughout his 42 year career he strived for professional harmony. He was honoured by his profession by being nominated as a CMA Senior Member. He cared deeply for his community and devoted much effort to serving. He also enjoyed the lake and skiing.



**1931~2007 Betty Anne Wood** was born in Toronto. She, and her husband Fred, were transferred to Winnipeg, where she assisted with a 'Brownie" group as a 'Brown Owl". They retired to Tappen in 1978. Betty, as she was known, volunteered with the Salmon Arm Food Bank. She was a people person and soon became the manager, retiring after fifteen years. She and Fred were members of the Salmon Arm Square Dance Club where she held executive positions both locally and regionally. Truly young at heart she was described by many of her friends as a great lady with a ready smile.