



## 2021-2022 Progress Report

SHUSWAP HOSPITAL  
FOUNDATION

*Together We Can*



# Contents

Our Sponsors . . . . .	2	Thank You To Our Healthcare Heroes	14
Supporting Better Healthcare . . . . .	3	Thank You For Our Community Support	15
Together We're Improving Lives . . . . .	4	Shuswap Health Care Auxiliary . . . . .	16
Paying it Forward . . . . .	5	Our Champions . . . . .	17
Surgical Equipment Upgrade . . . . .	6	Honouring Our Donors . . . . .	18
CT / Mammography Unit Update . . . . .	9	Our Board . . . . .	19
Evelyn Painter . . . . .	12		

## Thank you to our sponsors who assist the Foundation with promotions and in-kind support

Agent Change	Grant Thornton LLP (CapServCo)	Rust Valley Restorations
Aria Medi Spa, Laser Clinic, Hair Salon	Headrig	Salmon Arm GM
Barley Station Brew Pub	Hilltop Toyota	Salmar Community Association
Barnard, Dave	Hub International Barton Insurance	Salmon Arm Golf Club
BDO	Hutch, Greg	SASCU
Blind Bay Village Grocer	Interfor	Sea-Dog Rentals
Bogies Driving Range	Interior Whitewater Expeditions	Sebastian's Salon
Braby, Derrick & Debbie	Jacobson Ford	Shuswap Cider
Braby Motors	Joan Halpenny	Shantz, Craig
Brecknell, Ted	Johnston Meier Insurance Agencies Group	Shuswap Lake Golf Course at Blind Bay
Broadwell, Brian	Larch Hill Vineyards & Winery	Shuswap Marina
Browne Johnson	Letourneau Notary	Shuswap Veterinaty Clinic
Burechailo, Bob	Lindy's Boutique	Sorrento Hair Fashions
Canadian Tire	Lorraine Beaudoin	Sorrento Timbermart
Canoe Forest Products	Lynd, Warne & Gloria	Stacer, Jeff
Carlson, Tanja	McKibbon, Rob	Stella-Jones
Chadalin Medi Spa	McLeod, Susan	Sunnybrae Vineyards & Winery
Club Shuswap	McTavish, Maureen	Tappen Co-op
Cockrill, Elaine	Mill Tech Industries	Tekamar Mortgage Fund Ltd.
Dhaliwal, Sunny	Munro's Sorrento Prescriptions	The Sutton Place Hotel
Dinoflex	Northern Plastics	Trent Sismey C.P.A.
Finz Bar & Grill	Pine Valley Logging	Twin Anchors Houseboat Vacations
Ford, Donna	ProAir Heating & Cooling	Weed, Jim
General Assembly Excavating	Quaaout Lodge & Talking Rock Golf Course	
Goodness Blind Bay Health Food	Robert Papworth / Scotia McLeod	



# Supporting Better Healthcare

## Angela Spencer SHUSWAP HOSPITAL FOUNDATION BOARD PRESIDENT



We could never have anticipated the dramatic impact Covid-19 would have in our world, our communities, and our lives since the spring of 2020. The global pandemic has continued to create obstacles and make it challenging for the Foundation to fundraise in our traditional ways. Although events were restricted this year, we were able to participate in our most successful Radiothon to date, where over \$81,000 was raised! In addition, we hosted our annual golf tournament in August 2021 where over \$86,000 of donations were raised. So, despite the restrictions on public events, I am pleased to report we have had another successful year thanks to the incredible generosity of our community including the donors, benefactors, and volunteers.

For fiscal year, 2020/2021 the Shuswap Hospital Foundation raised a total of \$1,437,182. A significant portion of those were estate donations totalling \$940,910.

The Shuswap Hospital Foundation looks forward to honoring the legacies of these charitable benefactors as their funds are invested in the healthcare infrastructure of our community benefiting future patients and visitors of the hospital.

Total amount of funding expended on capital equipment purchases as of March 2021 was \$373,442. Total amount expended on capital equipment purchases from March 2021 to September 2021 was \$814,235. Included in the equipment purchases was upgraded equipment for the operating rooms such as ortho power sets \$30,750, anaesthetic monitors \$33,918, vital signs machines \$29,084, thumb scopes \$37,900, arthroscopy sets \$34,743. The Foundation was also able to provide lift tables and chairs for Bastion Place \$8,455, Sonosite Edge ultrasound machine for \$31,028, and a donation to assist with the operations of the cardio rehab program for \$12,500. In January of 2021 the Foundation board committed to the purchase of an additional \$300,000 of equipment to enable a significant surgical uplift for the operating room area at Shuswap Lake General Hospital. Purchase of this surgical equipment would enable increased levels of small bone surgeries to

be performed at SLGH, providing a closer-to-home service for local patients.

We were thrilled to announce that the Foundation, in partnership with Interior Health, have agreed to undertake our most ambitious fundraising campaign to date. We are working to raise \$3.3 million to expand the breast cancer screening facilities and capabilities at the Shuswap General Hospital with a new mammography unit. This new equipment will allow for diagnostic capabilities locally, removing the current need to travel outside our community to access these services. Your generous donations will also assist in purchasing a new CT scanner, a critical and highly utilized piece of equipment at the hospital, this new CT scanner will be installed at SLGH by November 2021.

These successes speak to the resilience and adaptability of our donors, partners, staff, and supporters.

We are most grateful to you, our donors and supporters, who have stepped forward during this year of unprecedented challenge and change. We are humbled by your generosity which has had such a profound and enduring impact on our hospital and our greater community.

Check out our website!  
Go to [www.shuswaphospitalfoundation.org](http://www.shuswaphospitalfoundation.org) to find out more about our organization, our latest updates, as well as options for donating to support better healthcare in our community.



You can inspire hope, health and healing through your donations because patients are our priority.

[DONATE NOW](#)

[HOME](#) [WAYS TO GIVE](#) [YOUR DOLLARS HELP](#) [RECOGNITION](#) [ABOUT US](#) [ANNUAL REPORTS](#) [CONTACT US](#)



**YOUR DOLLARS IN ACTION**

FUNDING GOALS



WAYS TO GIVE

We have options



CHECKLIST FOR GIVING

To ensure you



HOW TO GIVE

Giving can be a

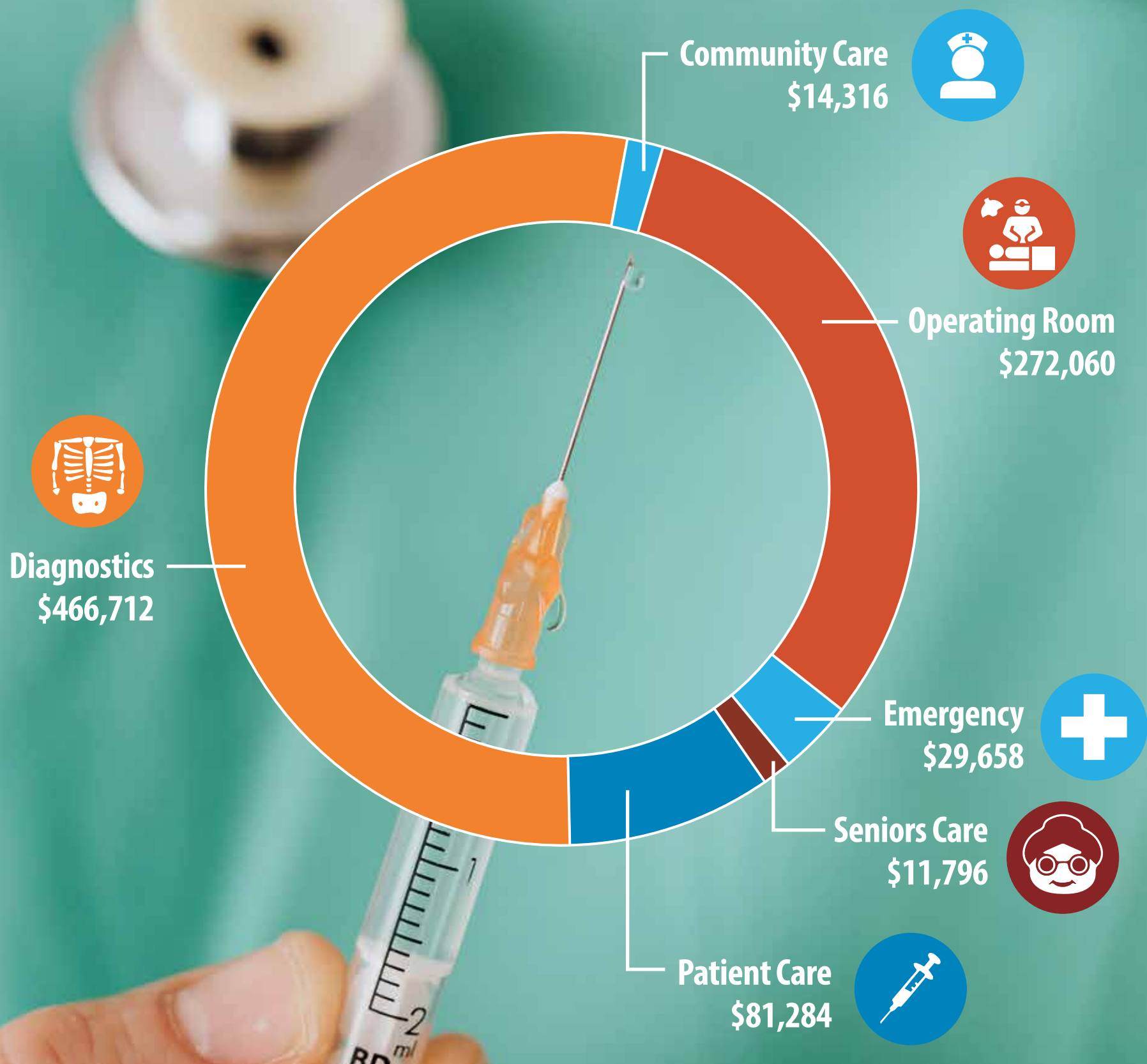
**LATEST NEWS**

6TH ANNUAL CHARITY OPEN - AUGUST 21ST, 2021, WINNER ANNOUNCED

[READ MORE](#)

CT SCANNER & MAMMOGRAPHY UNIT

# Together We're Improving Lives



# Paying It Forward

- Be sure to make a will and make clear your intentions rather than allowing others to decide for you. Documents and wording templates are readily available to complete the transaction based on your philanthropic wishes. Consult with your legal representative and family.
- Shuswap Community Foundation Endowment Fund is another way to support the hospital. Create an endowment with the Shuswap Community Foundation. Only the annual interest on the fund is disbursed.
- Donate shares, securities, property, and other investment instruments and take advantage of capital gains tax benefits. This is a positive way to maximize estate-planning objectives.
- Donate an insurance policy by naming the Shuswap Hospital Foundation as the beneficiary. This is a very practical way to make a significant impact without diminishing other assets.
- Meet with your accountant, lawyer, or financial advisor to determine the appropriate type of gift that meets your financial goals.

## 2021 at a Glance

**\$1,437,182**

Revenues received by the Shuswap Hospital Foundation to make health care better in the Shuswap.



**613**  
Donations  
received



**1,278**  
Ambulatory  
care visits



**20,254**  
Emergency  
Room visits

**3,046**  
People  
admitted to beds



**3,130**  
Surgeries



**170**  
Babies  
born





# Surgical Equipment Upgrade

Provincial funding and dedicated teamwork have provided a huge boost to the surgical department at Shuswap Lake General Hospital (SLGH).

When the BC government introduced a plan to catch up on surgeries that had been delayed because of pandemic closures across the province, SLGH submitted a proposal to increase capacity here, says Lannon de Best, Interior Health's Clinical Operations Director North Okanagan.

The successful plan resulted in \$1 million in provincial funding for equipment and "probably a bit more for the cost of (renovating) the operating room," he says, noting several million dollars were required to create capacity. The Shuswap Hospital Foundation stepped up with \$300,000 toward the purchase of equipment.



Lannon De Best

SLGH received approval to open a third operating room three days a week. This has made new surgical services possible, including orthopedic surgeries on wrists, hands and feet.

"What we do is really highly technical and required microscopes and new equipment to do these surgeries that are not done in many sites," he says. "And we had surgeons willing to come from Vernon and

Kamloops."

Lannon says the funding allows the OR Department to perform close to 800 additional surgical cases a year. Since the original shutdown in 2019, the pandemic has shown no significant impact to surgical services that also include gynecology, urology, general surgery, scopes, orthopaedics, dental surgery and maybe some exciting additions on the horizon.

"We remain on track and some additional time has become available, so we're looking to attract more surgeons," he says.

Lannon has high praise for the Hospital Foundation's commitment and continued support.

"They enable us to do more and better every year," he says. "The contribution they make to our equipment purchasing plan is critical and allows us to do things and partner with our (Interior Health) team to do that."

Not only are SLGH's surgical services allowing area residents to access care locally, they are bringing patients in from several communities.

"This is a great boost for the surgical department to be exposed to and now performing new surgeries that this community didn't have a year ago; that's a really big win for the hospital," he says. "We can now support the health authority in doing additional surgeries and support the local community as well."

## Mini C-Arm with Pulsed Fluoroscopy

OrthoScan FD Pulse is the first and only mini C-arm with pulsed fluoroscopy. FD Pulse provides dose reduction with state-of-the-art image quality. The square-shaped CMOS flat detector provides the greatest field of view, enabling the user to see more anatomy. This flat detector design and compact form factor allow optimal positioning in the surgical environment. Surgical lights on the undersurface of the x-ray source reduce shadows by providing direct light in the surgical field, illuminating anatomical detail. This mini C-arm is essential to being able to provide orthopedic procedures at SLGH.



# Surgical Equipment Upgrade



## Arthroscopy Set



Arthroscopy allows the surgeon to see inside the joint (knee/elbow/wrist/thumb) without making a large incision through the skin and other soft tissues. The arthroscope is connected to a video camera, and the joint's interior is seen on a television monitor.

The camera displays pictures on a video monitor, and the surgeon uses these images to guide miniature surgical instruments. This results in reduction of pain for patients, less joint stiffness, and often shortens recovery time and quick return to work and one's favourite activities.



## Plaster Cast Cart

The Plaster Cast Cart provides optimal efficiency within the department, assisting with organization, storage, and mobilization of supplies used to treat strains, sprains, and fractures. Instruments can be organized by size and variety and inventory can be easily assessed. This provides the OR team with all essential supplies in one place for all patients' individual cast needs.



# Surgical Equipment Upgrade



## SPIDER2 Limb Positioner

(Left) The SPIDER2 Limb Positioner allows proper patient positioning for shoulder/elbow and wrist/small joint arthroscopy surgeries. The integrated positioning switch rods removes the need for tedious manual adjustments and readjustments during surgery which provides a reduction in length of time a patient has to be under anaesthesia.

(Below) This section of the limb positioner will hold specific traction instruments to allow for proper positioning of the limb.

## SPIDER2 Traction Attachment





# Bigger, Better, Faster

The only thing that will be reduced in the new Prism CT Scanner is the level of radiation.

And that's a good thing.

Slated for installation on November 15, the new machine will provide 10 to 12 more years of life and will be able to perform scans that have not been available with the old equipment. This includes brain and lung perfusion, in which tissue is scanned to measure the amount of damage caused by the interruption of blood flow due to blood clots, says Kim Mead, the Imaging Department's Professional Practice Leader.

The machine can also improve vascular imaging with dual energy scanning, which produces a high-quality, multiple image set rather than the single picture provided by the old machine.

As well, a wide field detector allows the scanner to capture the entire heart in a single rotation, in 0.2 seconds, says Kim of the \$2 million machine.

"This is the top Canon model in the country, the best they have to offer in all of Canada," she says, noting that the addition of a CT Scanner 12 years ago greatly improved the level of service provided at Shuswap Lake General Hospital. "It has allowed us to become a 'hot stroke site,' which is huge for our community."

This means a person undergoing an acute stroke can be diagnosed and treated in Salmon Arm or sent to Kelowna for immediate clot-removal surgery if required.

"We were one of the first to do cardiac CT

scanning in Interior Health and we had the best model available," says Kim, pointing out the Foundation bought the top-of-the-line machine last time and are doing so again. "The Foundation has always supported the Imaging Department with generosity."

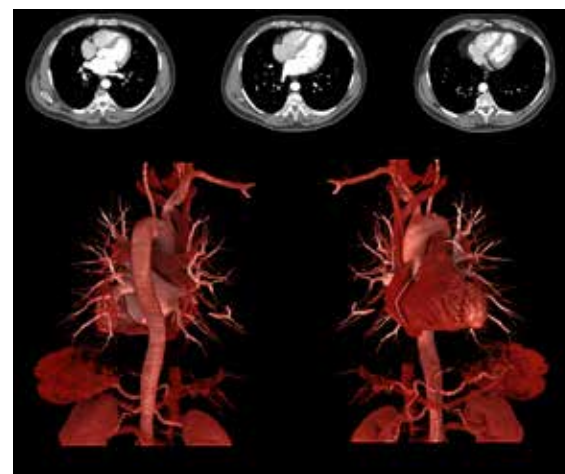
Having a high-quality CT scanner has allowed the department to provide service to 100,000 people across Interior Health, including as far north Williams Lake, putting through more outpatient scans percentage wise than any other site in the health region.

"Up until recently, we exceeded all provincial targets, providing emergent scans within 24 hours," Kim adds, noting scans are done in the timeframe doctors request. "We have one of the shortest waitlists in all of Interior Health and take referrals from Vernon and Kamloops on a regular basis."

When installed in 2009, the CT Scanner operated with only one staff member, Monday to Friday from 8 a.m. to 4 p.m. Now the Imaging Department has five radiologists, five full-time imaging employees and operates 24—7.

"We have five permanent CT staff and a half-dozen trained casual staff for vacation relief," adds Kim. "They will be training for the next two weeks so we are ready to go on 15 November."

*Left: Prism CT scanner. Below: Cardiac scan imagery.*



# CT Scanner Update



Left: Kim Mead, left, and Dr. Aron Zuidhof.  
Below: Scan of hand and wrist.

Enthusiasm is also high in the Emergency Department.

Dr. Aron Zuidhof, Medical Director, IH Emergency Services Network, says members of his department are very much looking forward to the installation of the new CT scanner.

"It hugely improves our ability to provide care," he says, noting the scanner has become the standard of care for Salmon Arm and has been sorely missed since the old equipment was removed on Oct. 18.

Zuidhof says once installed in the newly renovated space, the scanner will be useful to the ER in the diagnosis and treatment of stroke, trauma, kidney stones, gout, blood clots in lungs and Covid. It will also be immensely helpful in finding and diagnosing abdominal issues, he adds.

Also important, is the ability to "dial down to minimal doses," particularly in young children whose bodies are more susceptible to radiation.

"We hugely appreciate the Foundation ensuring that the hospital is kept up to snuff," he says. "Having the CT and having Foundation support is a huge bonus for us."

While they are looking forward to the new machine, imaging staff said goodbye to the old scanner with heavy hearts as "the little workhorse" had performed 96,468 scans over the 12-year period.

CT services were temporarily diverted to Vernon and Kamloops while renovations are made to bring the room up to 2021 building code standards.





# Mammography Program

The Foundation is also providing another \$1.5 million in funding for a mammography X-ray machine.

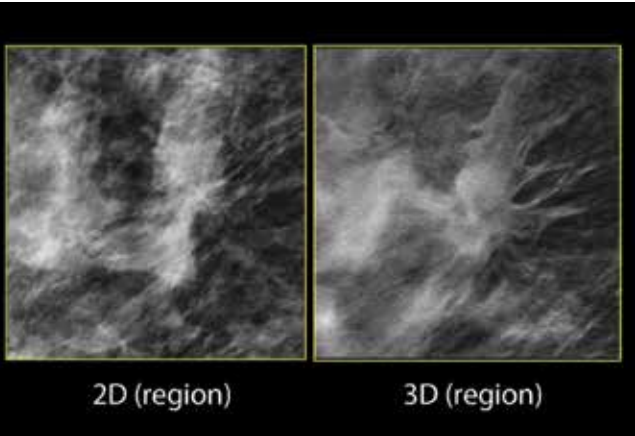
“We’re in the early planning stages and finalizing conceptual drawings,” says Kim, noting the \$600,000 machine requires approximately \$1.4 million in renovations to bring a former Imaging Department space up to code. “We’re buying all the equipment needed to provide screening and diagnostic mammograms as well as stereotactic biopsies.”

Expected to be in operation by the fall of 2022, the new equipment will mean breast tissue can be X-rayed and lumpectomies performed locally, if necessary. This is great news as it provides another service patients can receive without having to travel to another community.

“We had originally said spring of 2023 but the (IH) project team was on it faster than what we thought it would be,” Kim says, with enthusiasm. “They’re doing a lot of projects in Salmon Arm and we’re just kind of rolling with it.”

Kim is grateful to the Foundation and Interior Health for facilitating tremendous growth in equipment and staff over the past 12 years.

“I truly am blessed by the relationship we have with the Foundation,” she says. “I do know that when I need something, I can go to them and they accept the challenge graciously. And they come through for us.”



Mammography imagery

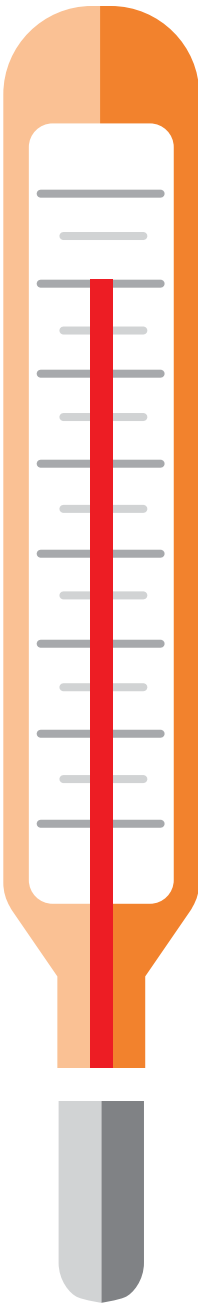
## Help Us Reach Our Goal!



**\$3.3 Million**

**Almost There!**  
**\$2.4 Million**

*Raised through the generosity of the Estates of Don Hilton, Geoffrey Collins, Evelyn Painter, Robert Haney; and anonymous donors*



**Target:**  
**\$3.3 Million**

**Achieved:**  
**\$2.4 Million**

**Donate to Our Campaign Today!**

**CT Scanner / Mammography Unit • \$3.3 million**



Name \_\_\_\_\_

Address \_\_\_\_\_

City \_\_\_\_\_ Prov \_\_\_\_\_ Postal Cd. \_\_\_\_\_

Tel. \_\_\_\_\_

Email \_\_\_\_\_

Donation Amount \_\_\_\_\_

☐

VISA

☐

M/C

☐

CHEQ

☐

CASH

Cardholder Name \_\_\_\_\_

Card Number \_\_\_\_\_

Expiry Date3 MO \_\_\_\_\_ YR \_\_\_\_\_ digit security code \_\_\_\_\_

➔ Please mail to: **Shuswap Hospital Foundation** Box 265, Salmon Arm, BC V1E 4N3

Charity# 89043  
1877 RR001

# Evelyn Painter

The late Evelyn Painter viewed and treated the people of this community as her family.

The support she contributed during her lifetime will continue through generous bequests. Among them was a \$415,910 gift to the Shuswap Hospital Foundation.

“She was a wonderful person and generous when she saw needs,” says longtime friend Bob Papworth, who notes Evelyn sometimes became aware of issues through people she associated with, and was troubled that diagnoses and appropriate treatments often required travel to other communities. “She felt that we had to have the services here.”

Evelyn wanted the money she left to the foundation to be used for the purchase of equipment pertaining to examinations at Shuswap Lake General Hospital, and the new CT scanner and a Mammography Program are a perfect fit, says Fiona Harris, Director of Development. Total costs, including installation of the new equipment, are in the range of \$4.4 million, with the Foundation providing 75 per cent of the funding.

Of the many interests Evelyn nurtured during her lifetime, several were remembered in her will.

Born in 1928, Evelyn Carsten was a firm believer in the importance of literacy. As a young girl, she left her home in rural Saskatchewan to board with another family in order to attend school.

Although it was considered unusual for women to participate, Evelyn played a variety of sports in her youth. She continued to enjoy cross-country skiing and golf well into her 70s and was an avid supporter of sport in Salmon Arm.

Evelyn met Harold Painter, her future husband, while working at International Harvester. That was followed by a career with the Regina Police Force where she worked until her retirement in 1988.

The couple headed west in search of a place to spend their

retirement and were immediately drawn to Salmon Arm. Evelyn and Harold moved here in 1989 and, believing that you get what you put into it, Evelyn quickly became involved in the community.

Sadly, the couple’s dream of a long and healthy retirement together ended with Harold’s death the following year.

Although new to the community, Evelyn chose to remain in Salmon Arm where she spent the next 30 years tending her beautiful



*Below: Evelyn enjoyed a variety of sports. Right: Evelyn and Harold's wedding.*





# A Community Champion

gardens, preparing gourmet meals, sewing, playing golf and becoming a passionate supporter of the Salmon Arm Silverbacks. A season ticket holder, she enjoyed the games from her own seat.



“After Harold passed, she looked at, and became aware of, things that had a positive effect,” says Bob, who sat with Evelyn on the Shuswap Community Foundation Board of Directors in its early days. “She was struck by donating and how much good was coming from that, and it had her looking at it significantly.”

Passionate about the power of books, Evelyn thoroughly enjoyed teaching adults to read and established the Painter Endowment Fund, which focuses on adult literacy.

She also left a bequest in the same amount as the Hospital Foundation, with funds directed to programs supporting literacy for children,

youth and adults; programs which improve quality of life for seniors residing in care facilities; and programs for reducing barriers to participation in amateur sport.

“Through her generous bequests, many needs will continue to be met in perpetuity, and thousands will benefit,” Bob says, pointing out that Evelyn also left money to the Churches Thrift Shop. “She was aware of what was meaningful in the community and was willing to support that.”

Evelyn was also devoted and generous to her friends and anyone who did work for her, believing that when you have much, you must give much, Bob adds.

“She had no children, so maybe that’s why she looked to community as her family,” he says, pointing out that directing the bequest to the new CT scanner and mammography program “is absolutely right in line with what she wanted.”

The project is also important to retired cardiologist and former Shuswap Hospital Foundation president Brian Ayotte, whose wife, Gail, died of breast cancer in 2020.

The couple had been generous donors to the foundation, and when Gail died, Brian asked that all donations in her memory be made to the breast health program.

“In the last 14 years, progress has been phenomenal,” he says, noting that the addition of more services to Shuswap Lake General Hospital reduces the need for travel to other centres. “To see services to the community expand is a lovely feeling; it contributes to the community and its well-being.”



*Evelyn and her dog Rover.*



# Thank You to Our Healthcare Heroes



We are proud to be a part of such an amazing team that work hand-in-hand to provide excellent patient care for our community. Our team provides patient care with dedication and collaboration from each of our departments, which includes the Booking office, Pre-surgical Screening (PSS), Medical Device Reprocessing (MDR), Surgical Day Care (SDC), Operating Room (OR), Endoscopy, Post-Anesthesia Recovery Room (PARR), Housekeeping, and our Purchasing department.

Kim Stasiuk, RN, says, "I've been asked numerous times what makes SLGH such a special place to work. My answer is always quick and simple. We laugh - a lot! We provide exceptional care. Incredible teamwork. SLGH is a small hospital with a huge heart!"



Bev Fleming works in a newly-created Pharmacy Technician Sterile Compounding Coordinator position, where she plays a crucial role in the implementation of the NAPRA standards (National Association of Pharmacy Regulatory Authorities). She is part of a team devoted to standardizing sterile compounding to improve patient safety. She actively participates in the development of policies, procedures and guidelines. Bev is enjoying her new role here at SLH and is looking forward to the future.



Shelby Henry, Rehabilitation Clerk (seated, in image), loves working with patients. Rehab is a very special department, as patients are recovering from major surgery, stroke or injury. Seeing patients progress and improve as they rehab is very rewarding. "I love working in our hospital," says Shelby. "It is a wonderful, friendly team atmosphere, everyone is very patient-care driven, and you can see the dedication in the improvement and success of our patients."



Wendy Goldman RN, CVAA(c), says that she loves the close working relationships that are evident at SLGH - not just with other nurses but with all members of the health care team (housekeeping, food services, lab, allied health, physicians, etc). When there's an emergency, everyone in the building responds to support the situation, and each other. It's really special being part of a close-knit community like the one at SLGH.



# Thank You For Our Community Support

## Bounce Radio's Radiothon

Last year Bounce Radio's Radiothon raised \$80,000 for the Shuswap Lake Hospital Foundation.

This popular and successful annual event has provided significant funding to the Foundation over the years, with a huge \$21,000 boost from Branch 62 of the Royal Canadian Legion this year.

"Our hospital has great services to keep families happy and healthy and close to home," says Bounce Radio's "Morning Man" Patrick Ryley, who points to the burden of stress and expense patients bear when they have to travel out of town for healthcare support.

He says the radio station is always looking for ways to support the community and the people who live and work here.

"The Foundation tells us what they need, and we just go put the call out," he says. "If the money funnels into that place, we all benefit."



## 6th Annual Charity Open Golf Tournament

It's a "fore" letter word that raises much-needed funding for the Shuswap Hospital Foundation.

Twenty-two teams of four golfers enjoyed a day on the links on August 21, and combined with an online auction, a 50/50 draw and private donations, the 6th Annual Charity Open at Shuswap Lake Golf Course raised a whopping \$86,505.

When the dust settled and all the bills were paid, more than \$77,000 was added to the Foundation's coffers.

Rochelle Dale, a Foundation board member and organizer of this year's golf tournament, says the event would not have been possible without the extensive background work completed by Director of Development Fiona Harris and Cheryl Peterson, her administrative assistant.

Rochelle also gives enthusiastic kudos to the new owners of the golf course, who put out the welcome mat for the event and participating golfers.

A three-year member of the board, Rochelle says the foundation's role in providing healthcare to area residents is critical.

"What IH can't do, we can. We can make quick decisions that can help anybody using services at the hospital, Bastion Place and area health care facilities," she says, pointing out that, unlike Interior Health, the board can respond to requests in a matter of days rather than months.

When a vital piece of equipment broke down last year, the foundation bought a replacement, which was installed and operable within two weeks.

"We are approached when some things break down, and we get it done," she says. "I am gobsmacked myself about what the Foundation does for this community, the hospital, our health facilities and Bastion Place."





# Shuswap Lake Health-Care Auxiliary



Shuswap Lake Health-Care Auxiliary Society has been providing comfort and support to patients at Shuswap Lake General Hospital and residents of Bastion Place for 110 years. Equipment is purchased periodically as requested by management.

We provide emergency patients with a Comfort Bag consisting of a comb, toothbrush and toothpaste, if needed. Emergency clothing is also provided when necessary.

Each December, the hospital windows are painted to bring cheer to patients and visitors. Last year, we also adopted a Safe House family which helped to bring joy to their Christmas.

Our only fundraiser in 2020 was our annual Christmas gift wrap, which was very successful because of strong community support. Due to lack of funds, we were able to donate only to the local annual Radiothon, Children's Hospital in Vancouver and JoeAnna's House in Kamloops.

We awarded two scholarships totalling \$1,500 to Youth Health-Care volunteers pursuing studies in the health-care field.

Due to COVID-19, our members were no longer able to volunteer as Greeters and operate our Gift Shop, and the Youth Health-Care Volunteer program was also discontinued.

One of our members planted flowers on the Level 2 patio and cared for them over the summer. These were enjoyed by patients and staff.

Volunteers must be double vaccinated for COVID and we are now volunteering again in Imaging and the Rehab department. Our Gift Shop is now open daily from 1-3:00 pm on Level 4 at SLGH.

Recruitment for Youth Health-Care Volunteers has resumed and students will again be volunteering in our hospital and Bastion Place.

New members are always welcome. If interested, please telephone Kathryn Wuolle at 250-832-9001 or Joan Sargent at 250-832-8696.

*Above: President Edie, Deanna and Joyce display the beautiful handmade baby quilts available for sale at the Auxiliary gift shop. Many other unique handmade items are also available for purchase.*



## Health-Care Auxiliary Executive

<b>President 2020-22</b>	<b>Edie Swanson</b>
<b>Vice President</b>	<b>Brenda Laurenson</b>
<b>Treasurer</b>	<b>Glenda Lepine</b>
<b>Secretary</b>	<b>Joyce Fetterley</b>
<b>Foundation Liason</b>	<b>Gloria Lynd</b>



# Our Champions

## Cornerstone \$500,000 and over

Collins, Geoffrey E. – Estate • Haney, Robert - Estate

## Founders Platinum Fish \$100,000 - \$499,999

Askew, Dorothy - Estate • Cameron, Elva Cavell - Estate • Ferraro, Dominic Frank – Estate • Fogarascher, Eileen Margaret – Estate • Ford, Michael • Frick, Isolde • Heym, Rolf & Erika • Hilton, Donald & Darwin, Davey - Estate • Moor, Roy & Pamela • Morley, Samuel – Estate • Painter, Evelyn - Estate • Rotary Club of Salmon Arm • Sorrento Lions Club • (Dilworth Fund) • Wickert, Dr. John

## Patrons Gold Fish \$50,000 - \$99,999

Beale, Morley & Marie • Beckner, Dr. Kevin & Suzanne • Benson, Dorothy – Estate • Cruickshank, Aileen – Estate • Douhaniuk, Bill & Mary & family • Fogarascher, Eileen Margaret - Estate • Hall Gray Broadcasting • Johnston, Lloyd & Joy • Lindsay, Anne – Estate • Lions Club of Salmon Arm • The MacKays – Estate • Ian & Beth, Craig & Laurie • Piggott, Marion - Estate • RBC Foundation • Rendleman, Lorry & Isabelle • Revelstoke Hospital Auxiliary • Royal Canadian Legion # 62 • S.A. Daybreak Rotary Club • S.A. Savings & Credit Union • Shuswap Rotary Club • Thompson, Jerald • Thompson, Sandra • Tim Horton's 1946 • Valid Manufacturing Ltd. • Variety Children's Charity of BC • Willmer, John & Joan



A \$10,000 donation was provided by City Furniture.

## Builders Titanium Fish \$25,000 - \$49,999

Ahmadiyya Elders Association • Befus, Carol • Bell, Clifford • Bollywood Bang • Boyd, Scott • Casavant, Eugene & Lorette • Custom Spae Designs Ltd • Emmerzael, Fred & Marilyn • Gibson, Dilys & George • Johnson, Joe & Bobbi • Knights of Columbus #7107 • Longdo, Vernon & Dorothy • Loxton, Robert Garth 'Bob' - Estate • Masonic Grand Lodge of BC • McClellan, Brenda • McClellan, Lois – Estate • Milligan, Thomas • Monk, Douglas & Doriane • Monk, Ingrid – Estate • Paterson, Gavin • Pryhitko, Sheila • Pukas & Laird Families • Reddecliff, Ronald & Mav • Salmon Arm Medical Staff • Sandra Schmirler Foundation • Shuswap Lake Health Care Auxiliary • Shuswap North Okanagan Division of Family Practice • Smallpiece, Robert & Bernice • Tim Hortons • Titus, Don & Dorothy

## Benefactors Silver Fish \$10,000 - \$24,999

Access Precision Machining Ltd. • Ark Masonry • Arthur's Gem Set Studio • Askews Foods-Staff Charity • Ayotte, Drs. Brian & Dr. Gail • Bank of Montreal • Barnard, Frank • Braby, Derrick & Debbie • Bradford, Dorothy Joy • Bradford, Stu & Kathy • Canoe Senior Citizen Association • Cartwright, Tami & John • Co-op Employees Donation Fund • Derpack, Janice • Dhaliwal, Gurmail & Naranjan • Dolan, Paul & Marilyn • Douhaniuk, Mary • Drake, Milton & Pamela • Dube, Al – Estate • Dyke, Chris & Margreta • Edgell, David & Caroline • Figgess, Christopher & Sarah • Elks Lodge # 455 • Flatla, Larry & Bonnie • Gaunce, Ron & Louise Naddeau • Grizzley Curb • HBC Foundation • Hirtle, Rick & Linda • Hiscock, Dr Stephen • Hlina, Anne • Hyderman, Mark & Angela • Inview Optical Inc. • Jasman, Morley & Darlene • JC Johnston Land Surveying Inc. • Kuzek, Dan & Monica • Lepine, Leo & Yvonne • Low, Pamela & Cedric • LST Ventures • Mackenzie, Tracey Roxanne – Estate • Mackintosh, Diane • MacQuarrie, Roy & Vicki • Marshall, Beverley • Mathys, Werner MM Connie Mathys • McCall, Ines • McClelland, John Noel & Lila • McCook, Eric & Louise • McTavish, Dr. Maureen L. • Norgaard, Niels & Helga • North Shuswap Lions Club • Ogino, Naomi & Eugene • Overend, Howard & Clara • Owens, Ralph & Norma • Parfitt, Christopher & Marg • Penner, Dr. Lee • Potter, Dennis & Margaret • Pryhitko Matt & Beth • Randall, John Edward – Estate • Renaud, Aurelia – Estate • Romyne, Petrus C. – Estate • Salmar Community Association • Salmon Arm Royal Purple Lodge #279 • Scotiabank • Shields, Ian R • Shuswap Lake Senior Citizens Society • Sicamous Eagles Jr. Hockey Club March, Wayne, MM Lorraine March & Don LaRoy • Sneve, John – Estate • Spicer, Sandra – Estate • Stewart, Wilbert & Shirley • Shannon, Garry & Tana • T.D. Bank Financial Group • Team Telus Cares – Thibodeau, Sharon • Turner, Eddie & Carole • Wainwright, Ramona • Walton, Ellen • Wingate, Arlewyne & Walslow, Chris

## Partners Bronze Fish \$5,000 - \$9,999

Aitken, Eric & Freda • Albricht, Maarten & Joosje • Anderson, Harland & Roberta • Armstrong Regional Cooperative Membership • Arthurs, Kenneth – Estate • Babakaiff, Robert/Arro Wood Heat Barker, Jack & Irene • Barnard & Houle, Dave & Micheline • Beazley, Barbara • Berg, Barry & Tricia Martin • Bickle, Josh & Joanna • Bolton, Bruce & Ivy • Bolton, Byron & Sheryl • Brecknell, Bertha • Brese, Lillian • Brooke, Downs & Vannard LLP • Browne Johnson Land Surveyors • Burkitt, Laura • Buryniuk, Violet & Ernest • Canoe Forest Products • Carter, Louise • Chambers, Melvin • Chu, Gerald & Rita • Chhokar, Gurdip & Sandeep • CIBC Regional Office • City Furniture & Appliance • Cockrill, James Weed & Elaine • Corrie, Amanda & Burgess James & Chantelle • Davis, Christopher & Chrisi • Day, Barbara • Deakin, Andrea • DeMille, Brad & Kelly • Denney, Norman W. • Dhaliwal, Sunny & Prab • Dickson, Hazel • Dove Rebekah Lodge Foundation • Ellis, Mark & Joan • Enderby Lions Club • Erickson, Jacqueline • Folland, Elizabeth • EZ Rock Radiothon • Finch, Allen & Elizabeth • Fischer, Melody • Fowler, Roger • Gaunce, Ron & Irene • General Assembly Excavating • Genn, Steven & Leah Shaw • Gibson, George R • Graham, Alli • Gray, Ian & Holly • Gray, Shirley • Greggor, Rita • Grieve, Elizabeth • Halpenny, Don • Harris, Ross & Fiona • Harris, Brad • Harrison, Mark • Hewitt, Linda • Holloway, Jim & Dodie • Hughes, Daryl & Donna-Lynne • Hyde Mountain Golf Course • IWA Local 412 • Javdani, Arya & Schneider, Brad • Johnson, Margaret • Joly, Joseph • Jordan, Bernadette • Jurasek, Douglas & Lori • Kerr, A. Hermann • Kurta, Len & Nancy • Laidlaw, Dr. Lorna – Estate • Lakeside Insurance • Landers, Maurice & Olwen • Landmark Solutions Ltd. • Larson, Stewart • Leonhardt, Belinda & Steve • Lloyd, Eleanor • Luchtmeijer, Gerry & Kelly • Main, Dr. Christopher • McDonald, Jamie • McKay Family Charitable Foundation • McKee, Dr. Scott • McKendry, Warren • McKibbin, Rob & Lynn • McTaggart, Vernon • Melin, Mike & Christine • Mier, Emma • Moleschi, Kathy • Moore, Florence • Mounce, Wayne & Lorraine • Munholland, Pal and Al • Murray, Douglas & Carol • Murray, Judith & Blaine Carson • Myers, Dr. Danny • Myers, Duncan • Nardi, Gerald & Joan • Nayki, Thomas & Karen • Newnes, Ray • Norris, Clifford – Estate • Northern Plastics Ltd. • O'Sullivan, John & Wendy • - of Ted and Eileen • Parent, Edward & Natalie • Pendell, Herb • Penner, Scott • Phillips, Scott • Pine Valley Logging • Popham, Russ & Kathy • Pringle, William • Pukas, Karen & Sheldon • Rankin, Glenn & Linda • Revelstoke District Health • Rexall Foundation • Reynolds, Francis & Mary • Rickson, Russ • Sakup Enterprises • Salmon Arm Security Inc. • Save-On Foods • Schneider, Mark • Scholz, Muriel • Schon, Chris • Seymour Ridge Resources • Shuswap Dragon Boat Society • Shuswap Lake Senior Citizens Soc. • Shuswap Men's Chorus • Shuswap Quilters Guild • Sicamous Lions Club • Smith, Nelson • Stead, Jack & Edith • Steed, George & Gloria • Sterba, Franz & Karin • Strilchuk, Mary • Stokes, Margaret & Barry • Telus Corporation • Timtiman, Uldine • Trish's Country Kitchen • VanDenTillaart, Charlotte • Vandermeer, Bob & Elsie • Vandermeer, Michael B & Ruth J • Vaughan, Del & Mid • Vernon Shrine Club • Visser, Albert • Whitehead, Ted and Eileen - In Honour • Whitelaw, Charles • Williams, Dr. Ralph & Adelaide • Wood, Dr. John • Eileen - In Honour • Ylsto, Gordon

# Honouring Our Donors



Donations are the life blood of the Foundation and are highly valued, whatever the amount or occasion.

## In Honour Tributes

In Honour tributes are recognized with a picture and message. This is a wonderful way to pay tribute to those who have excelled in their role of service in the community and caring for others. Or, you may wish to pay tribute for a special anniversary, birth in the family, or wedding. In addition, the Foundation will send an appropriate card on your behalf to recognize the occasion.

## Memorial Tributes

With a donation of \$2,000, donors are invited to honour a loved one on the Foundation's website.

This unique tribute provides the opportunity to post a photo and words of remembrance in perpetuity.



## Recognition Wall

Iconic Shuswap sockeye swim on the recognition wall, each salmon bearing the name of donors who are recognized for their generosity, compassion and caring. The colour of the fish is determined by the size of the donation.

## Recognition Monitor

All donors since 2003 are listed including the 'Friends of the Foundation' those who have donated \$25.00 to \$4,999.

## Help to Create a Legacy

The Shuswap Lake Hospital Foundation's Legacy Fund offers a simple and practical way to help ensure funds are being gathered for future hospital needs, including the next phase for the ICU, as well as operating room renovations and expansion.

Be part of these crucial projects by helping to raise the significant funds needed to realize this dream for our hospital.

It's a simple way to be part of improving the quality of care available in Salmon Arm, and it's a charitable donation that can help take the bite out of income tax time.



# Our Board

---



Angela Spencer, CPA, CA  
President



Theresa Markowski  
Past President



Dr. Darren Lorenz  
Vice President



Sue Bolen  
Treasurer



Chris Davis  
Director



Sunny Dhaliwal  
Director



Steve Genn  
Director



Rochelle Dale  
Director



Dr. John Wickert  
Director



James Young  
Director



Gloria Lynd  
Director



Lannon De Best  
Hospital Admin Rep.

---

# Our Support Staff



Fiona Harris  
Director of Development



Cheryl Peterson  
Administrative Assistant



*Thank You*

*Your support matters every day  
because together we can make a  
difference ... every day.*

Contact us: 250-803-4546

[info@shuswaphospitalfoundation.org](mailto:info@shuswaphospitalfoundation.org) • [www.shuswaphospitalfoundation.org](http://www.shuswaphospitalfoundation.org)

Shuswap Hospital Foundation • PO Box 265, Salmon Arm, BC V1E 4N3